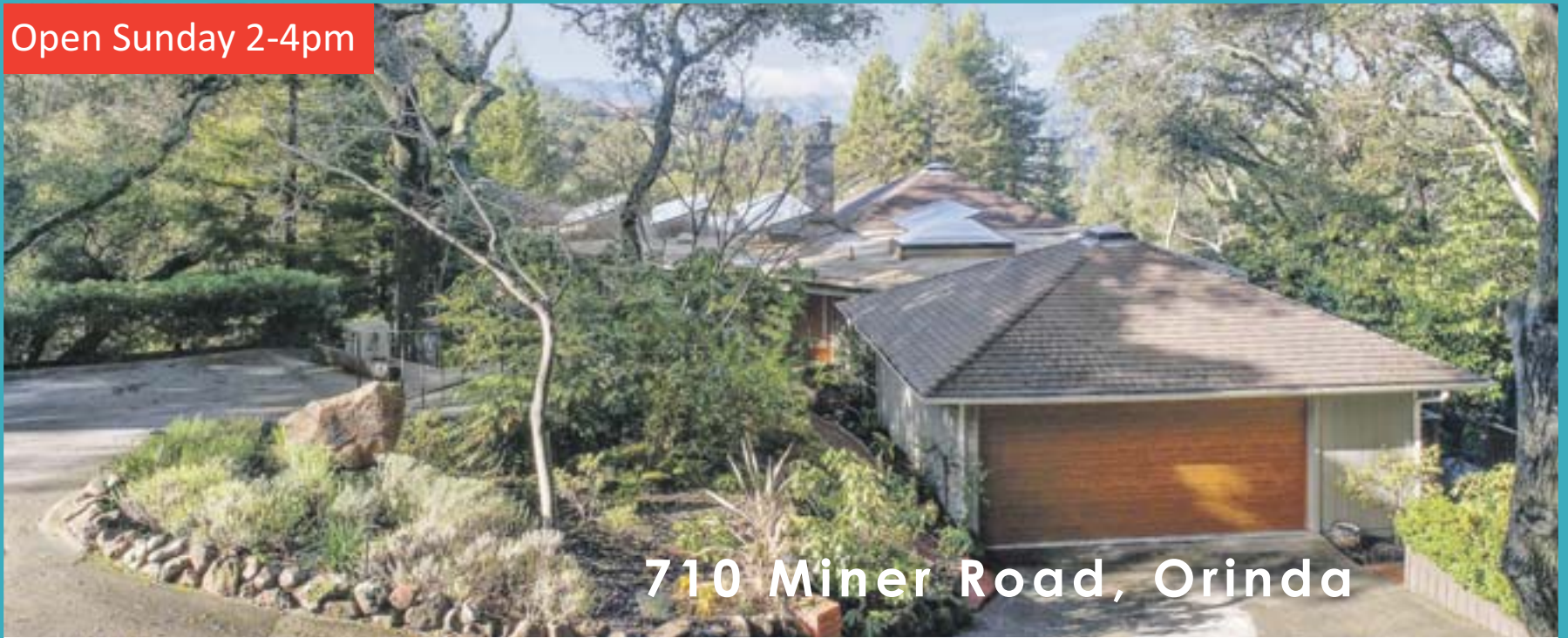


Open Sunday 2-4pm



710 Miner Road, Orinda



5 bd | 3 ba | 3088 sqft | 1.15 ac | \$1,799,000  
Located in the Miner Road enclave of family- friendly homes of incredible appeal close to the charm of downtown Orinda and Lafayette, BART & commute.



**CLARK THOMPSON**  
REAL ESTATE BROKER  
VILLAGE ASSOCIATES  
CALBRE# 00903367

Office: 925-254-8585 | [ct@clarkthompson.com](mailto:ct@clarkthompson.com)  
[www.clarkthompson.com](http://www.clarkthompson.com)

